



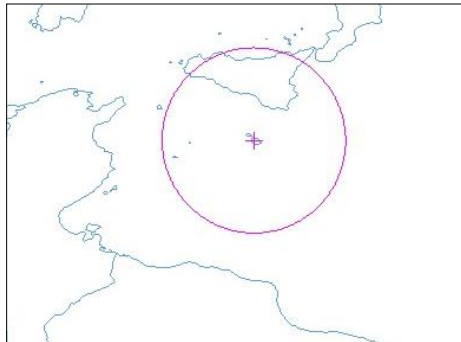
Information:

Malta's Allotted Satellite Slots and Associated Radio Frequencies

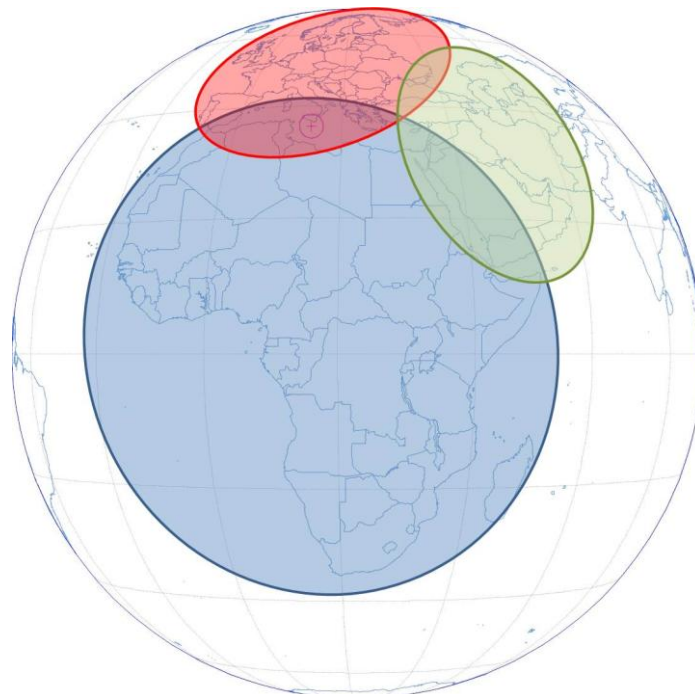
1. DESCRIPTION OF THE SLOTS

1.1 SLOT AT 22.8 DEGREES EAST

The BSS orbital slot allotted to Malta under Appendices 30 of the ITU Radio Regulations (planned bands) is located at 22.8 degrees East. The allotment of this orbital slot defines a coverage area limited to Malta (with some spill-over into neighbouring Sicily). The initial coverage area is shown in the figure below:



However, the covered area may be expanded in order to provide service to other markets, subject to the protection of existing allotments and other filings. The convenient position of this slot (figure below) makes possible the provision of services to different geographical areas as shown:



This orbital slot can be initially served through ten channels in the uplink and ten in the downlink, with a standard BSS bandwidth of 27 MHz per channel. The range of BSS frequencies served through

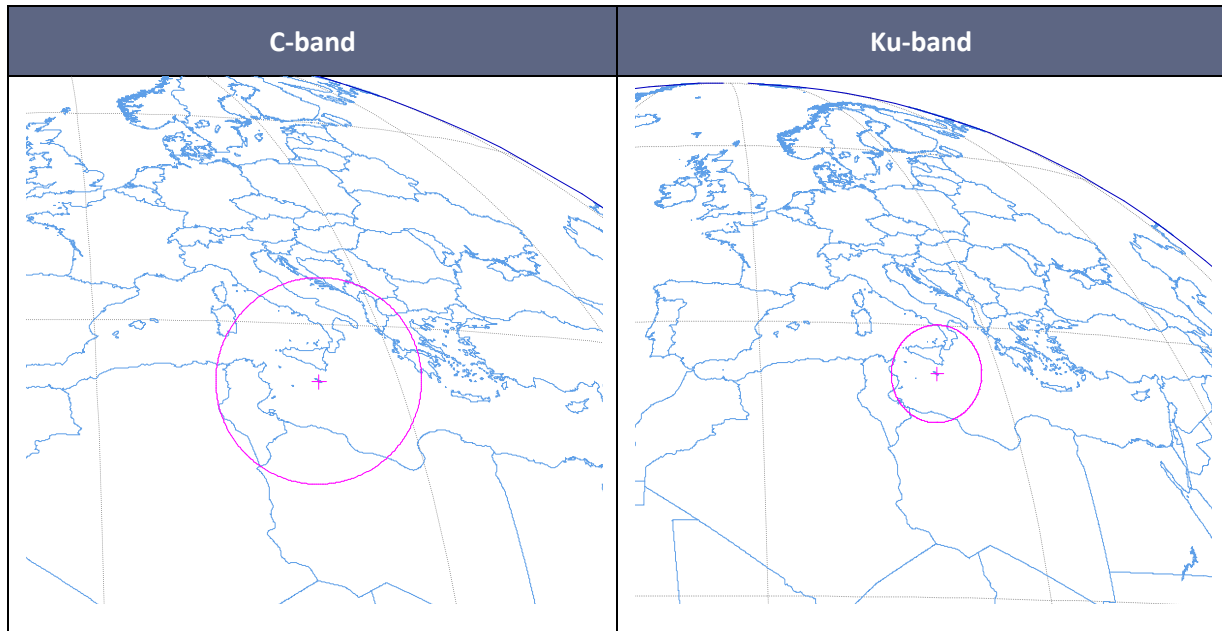
this orbital slot can be extended through a coordination process with other satellite systems, up to a potential maximum of 40 channels (20 channels for each direction).

The following channels are currently allotted to this slot:

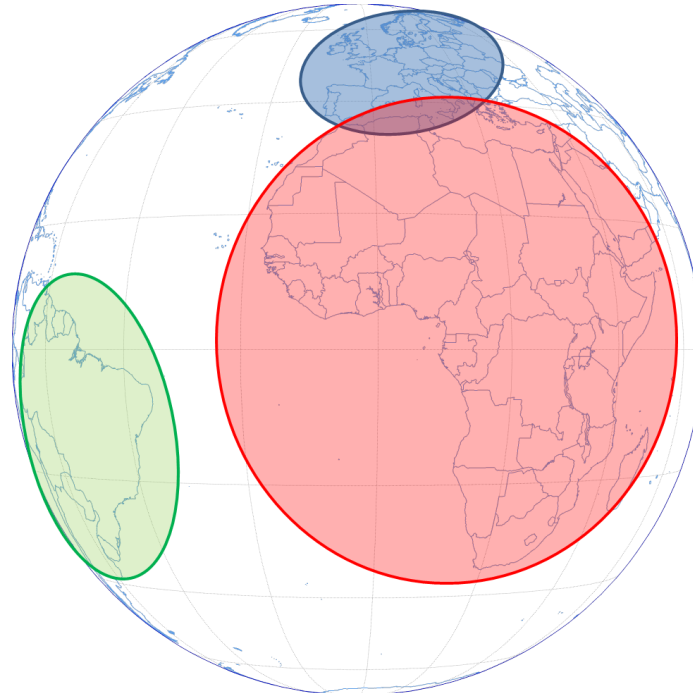
Downlink central frequencies (MHz)	Uplink central frequencies (MHz)
12,111.08	17,327.48
12,149.44	17,365.84
12,187.80	17,404.20
12,226.16	17,442.56
12,264.52	17,480.92
12,302.88	17,519.28
12,341.24	17,557.64
12,379.60	17,596.00
12,417.96	17,634.36
12,456.32	17,672.72

1.2 SLOT AT 3 DEGREES WEST

The FSS orbital slot allotted to Malta under Appendices 30 of the ITU Radio Regulations (planned bands) is located at 3 degrees West. The allotment of this orbital slot defines a coverage area limited to Malta (with some spill-over into neighbouring countries). The initial coverage areas for C-band and Ku-bands are shown in the figures below:



However, the covered area may be expanded in order to provide service to other markets, subject to the protection of existing allotments and other filings. The position of this slot (figure below) makes possible the provision of services to different geographical areas as shown:



This orbital slot can provide FSS in the C and Ku-bands through the following frequency ranges defined in the Appendix 30B of the radio regulations:

	Downlink frequencies (GHz)	Uplink frequencies (GHz)
C-band	4.5-4.8	6.725-7.025
Ku-band	10.7-10.95 11.2-11.45	12.75-13.25